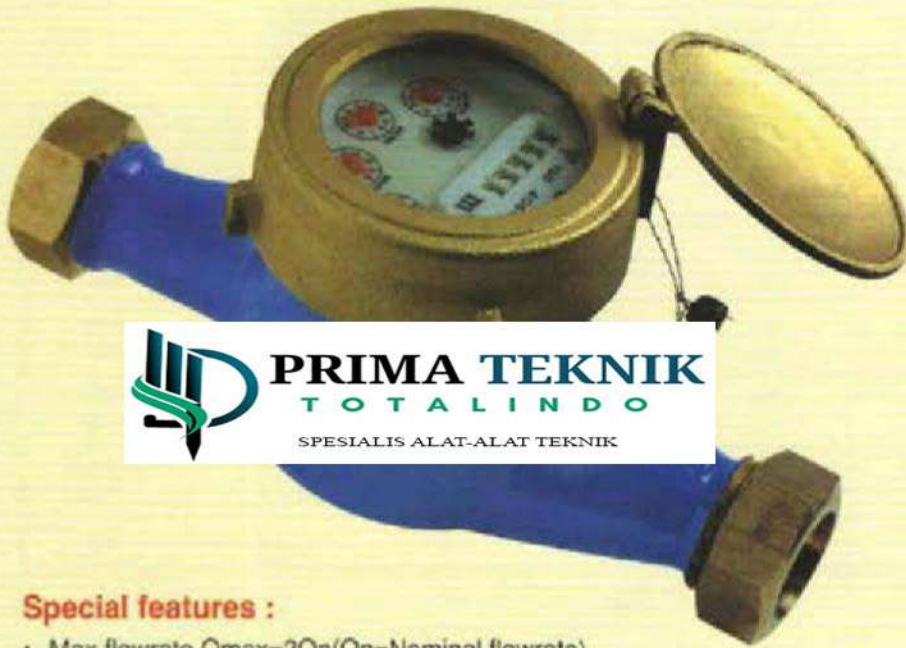




Type MT-EX-D 15-40 Fan-wheel Dry-dial Water Meter



DN 15, 20, 25, 32



DN 40

Special features :

- Max. flowrate $Q_{max}=2Q_n$ (Q_n =Nominal flowrate).
- Large measuring range, high flow accuracy, straight reading.
- Steady curve characteristics.
- Performance is up to standard ISO 4064B.

Meter design :

- Solid and robust design, long service guaranteed.
- Selected high quality materials guarantee absolute corrosion resistance.
- 2 Pole ring magnet polymer coating as protection against deposits.
- Universal interchangeable measuring insert.
- Meter fitted with strainer on inlet to protect against dirt, cleaning without breaking the seal is possible.
- Dia. 15-40mm with whitworth pipe thread.
- Vacuum register.
- Anti-magnet mechanism.
- Outer calibration device.

Working condition :

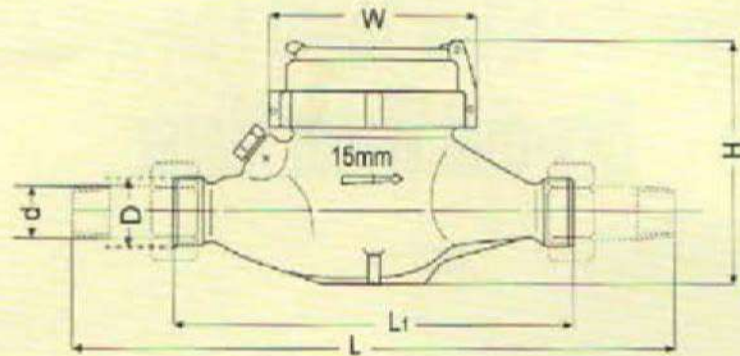
- Water temperature : $\leq 30^\circ \text{C}$
- Water pressure : $\leq 1 \text{MPa}$

Metrological data :

Meter Size DN (mm)	Nominal flowrate	Transitional flowrate		Minimum flowrate		Max. reading	Min. reading
	Q_n	Q_t		Q_{min}			
	m^3/h	$\leq \text{m}^3/\text{h}$					
		A	B	A	B		
15	1.5	0.15	0.12	0.045	0.03	99999.9999	0.0001
20	2.5	0.25	0.20	0.075	0.05		
25	3.5	0.35	0.28	0.105	0.07		
32	5	0.60	0.48	0.180	0.12	999999.999	0.001
40	10	1.00	0.80	0.300	0.20		

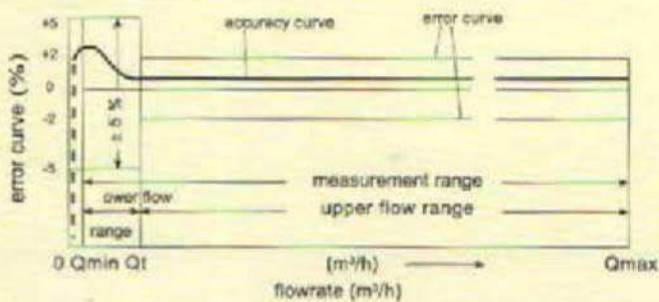
Type MT-EX-D 15-40 Fan-wheel Dry-dial Water Meter

Dimensions and Weights

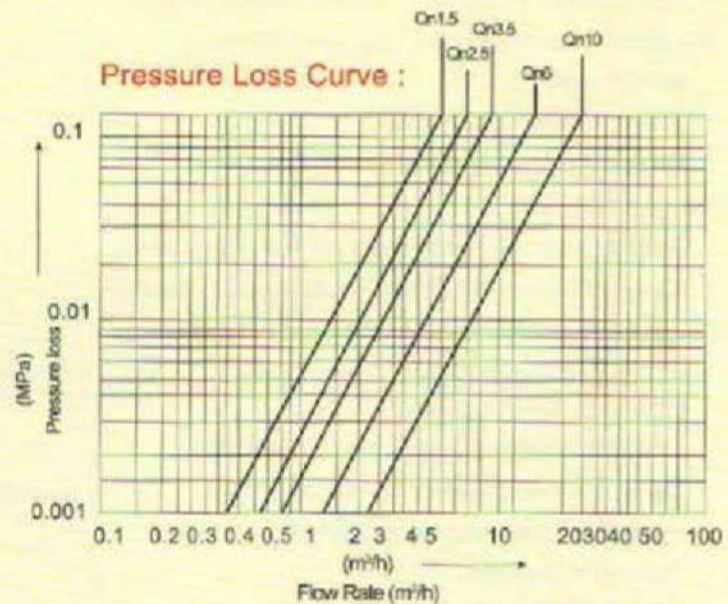


Description			Meter Size DN in mm				
			15	20	25	32	40
Length	L	mm	260	294	310	384	428
	L1	mm	165	190	190	260	300
Width	W	mm	98	98	103	103	135
Height	H	mm	115	114	125	127	153
Connecting thread	d		R 1/2	R 3/4	R 1	R 1 1/4	R 1 1/2
	D		G 3/4"	G 1"	G 1 1/4"	G 1 1/2"	G 2"
Weight		kg	1.7	2	2.5	3.3	5.8

Feature Curve Diagram Flow Error Curve



Pressure Loss Curve :



PRIMA TEKNIK
TOTALINDO

SPEKIALIS ALAT-ALAT TEKNIK