






# S H M F l o w m e t e r

## S e w a g e M e t e r s

Analog/Mechanical Cold 50°C and Hotwater 90°C Waste/Sewage Meter  
 Size : DN50-DN300 (50mm-300mm ; 2" - 12")

SHM – Sewage Hi-flo Meters - Analog/Mechanical Flowmeter for Waste/Sewage Water is an epoxy coated cast iron, it has great flow rate measure and resistant from many light chemicals and corrosion. It can be used for a remote reading transmission system as equipped with built-in sensor (optional) and with Data Logger, it can record for last six months logs.

				
Flowmeter Cold and Hotwater Mechanical/Analog/Pulse - Sewage/Waste Water With Stainless Steel 316 Cap	Stainless Steel 316L Type	High Quality Stainless Steel 316 Magnetic Vacuum Register	Data Logger For Pulse Type	

### Features:

- Easy Installation and Maintenance
- Stainless Steel Cap, Dry Dial Magnetic
- High Bypass and Very Low Head Loss
- Glass Vacuum Sealed Register -Free from Condensation and clear for long term
- Working Temperature 0.1°C - 50°C for Cold and 0.1°C - 90°C for Hotwater
- Max Pressure: 16 Bar
- Maximum Error : +/- 2%
- Selected High Quality Materials
- Iso 4064
- Warranty 2 Year

### Applications:

- Sewage Treatment Plant (STP); i.e: Hospital, Hotel, Industrial, Mall, Residential, Palm Oil Industrial, etc
- Raw Water, Sludge Water and many others
- Inlet and Outlet Water Treatment
- Best suited for pump system and high flowrate
- Many more applications

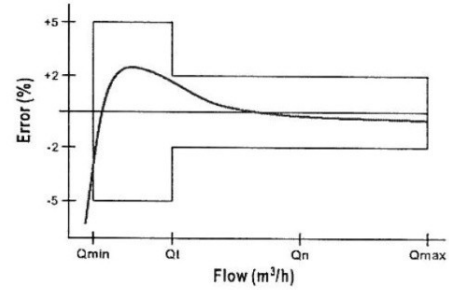
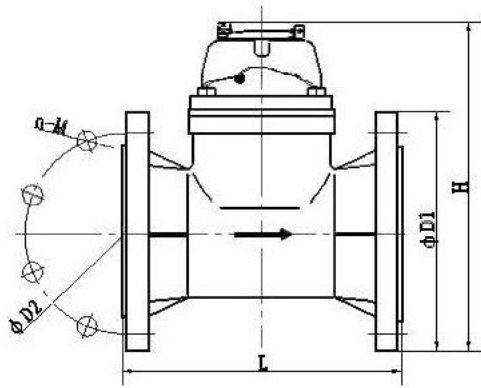
## Technical Specifications :

Size			Max Flow	Continues Flow	Transitional Flow	Min Flow
DN	Inch	MM	Qmax	Qn	Qt	Qmin
			M <sup>3</sup> /Hour			
DN50	2"	50	30	15	3	0.45
DN65	2.5"	65	50	25	5	0.75
DN80	3"	80	80	40	8	1.2
DN100	4"	100	120	60	12	1.8
DN125	5"	125	200	100	20	3
DN150	6"	150	300	150	30	4.5
DN200	8"	200	500	250	50	7.5
DN250	10"	250	800	400	80	12
DN300	12"	300	1200	600	120	18

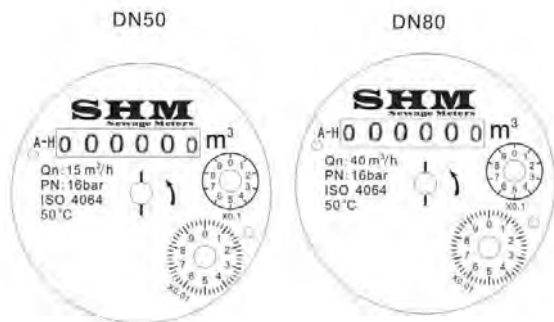
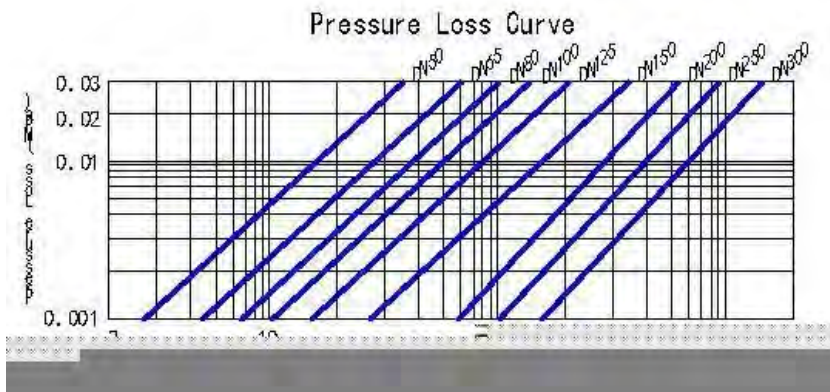
## Dimensions:

Size	L Length	H High	Connection Flange		Weight
MM			D1 Outside Diameter	D2 Bolt Inner Diameter	Kgs
DN50	200	272	165	125	10
DN65	200	274	185	145	11
DN80	225	281	200	160	16
DN100	250	291	220	180	17
DN125	250	312	250	210	21
DN150	300	341	285	240	30
DN200	350	384	340	295	41
DN250	450	435	405	350	66
DN300	500	486	445	400	100

## Drawing:



- $Q_{max}$  = maximum peak flow
- $Q_n$  = continuous flow
- $Q_t$  = transitional flow
- $Q_{min}$  = minimum flow





Epoxy Paint: Cat epoxy Merah kecoklatan yang tebal, melindungi dari bahan2 korosif

SHM NEW UPGRADE 2018

Stainless Steel 316 Cap : menjamin tutup tahan karat selamanya

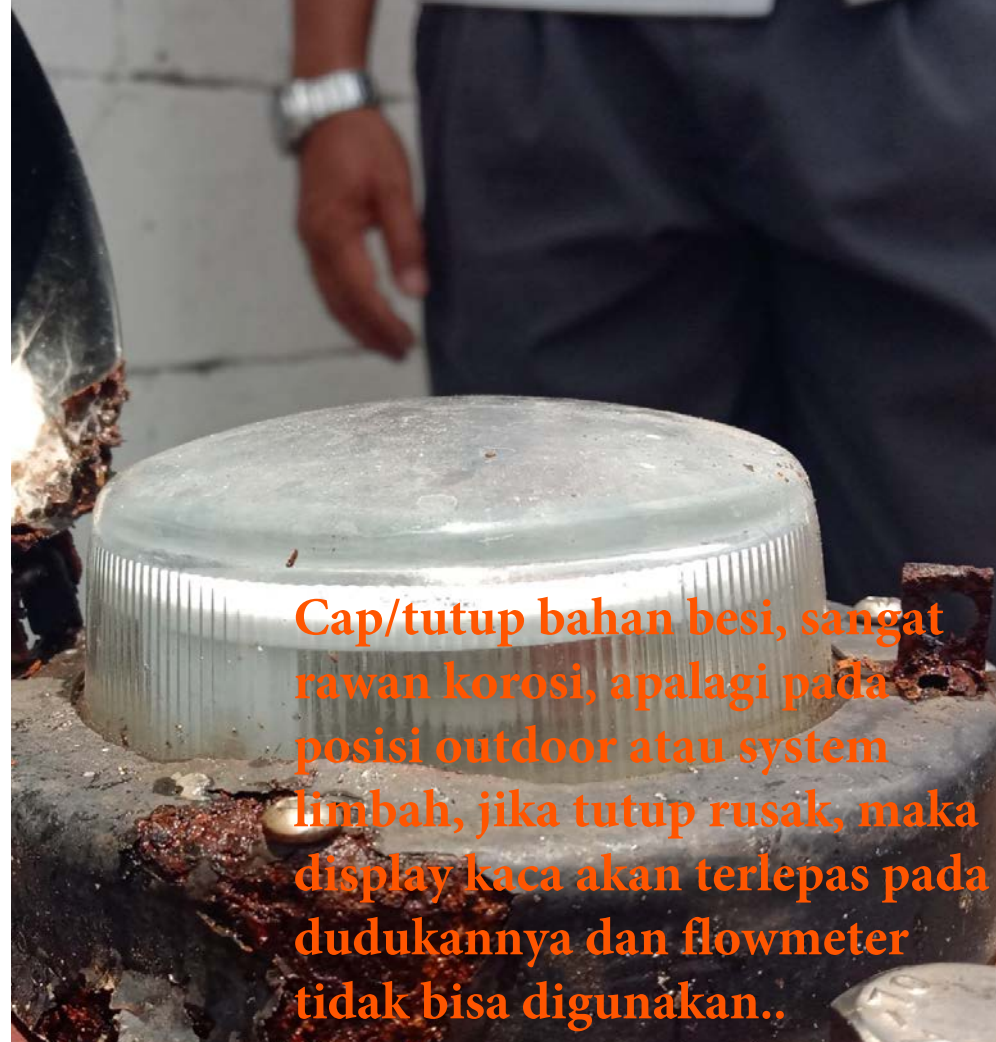
Vacuum Glass Register with stainless steel 316 inside: Anti kabut, anti buram, anti karat dan tetap bening selamanya

Unique Design: Desain unik anti macet, warranty panjang (2 tahun)



## New Analog Sewage Hi-flo Meters 2018 Glass Register With Stainless Steel 316 Cap





Cap/tutup bahan besi, sangat rawan korosi, apalagi pada posisi outdoor atau system limbah, jika tutup rusak, maka display kaca akan terlepas pada dudukannya dan flowmeter tidak bisa digunakan..



Handal di lingkungan terkotor sekalipun, body cat epoxy tebal dan tutup stainless steel 316 anti karat.



Cap/tutup Stainless Steel 316, Antikarat dan display akan aman pada dudukannya selamanya

